



Caro Point, 5 Gatliff Road
London SW1W

GARTONJONES.COM



Caro Point, 5 Gatliff Road
London, SW1W

£690 Per Week

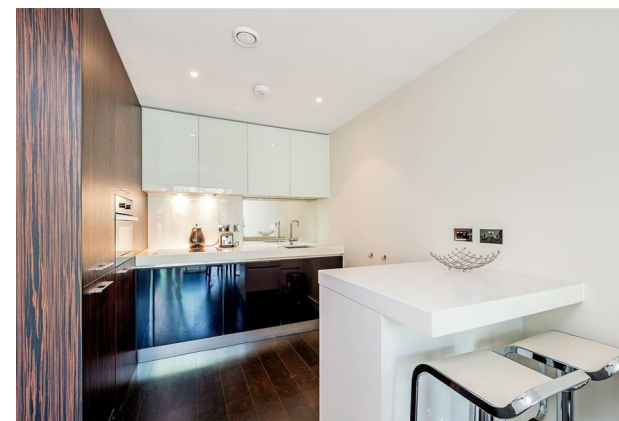
GARTON JONES.COM

8 Gatliff Road
Grosvenor
Waterside
Chelsea
London
SW1W 8DP

Lettings:
+44 (0) 20 7730 5007
gws@gartonjones.com
www.gartonjones.com

A ONE DOUBLE BEDROOM apartment of approx. 541 sq.ft (50.2 sq.m) to rent in Caro Point, part of the popular Grosvenor Waterside development. This FUNISHED apartment has an open plan reception room, kitchen with integrated appliances, bathroom, good storage including a utility cupboard housing a washer dryer, fitted wardrobes. Parking maybe available by separate negotiation. 24 HOUR CONCIERGE, GYM & SPA. On-site Sainsbury's Local, coffee shop and private kids club. SLOANE SQUARE & VICTORIA station with Gatwick Express are within walking distance.

- 541 Sq.ft (50 Sq.m)
- One Double Bedroom
- Open Plan Reception Room
- Kitchen with Integrated Appliances
- Luxury Bathroom
- 24 Hour Concierge
- Parking May Be Available Under Separate Negotiation
- Residents Gym & Spa
- On-Site Sainsbury's, Blue Horizons Nursery, Coffee Shop & Purple Dragon Private Kids Club
- Close to Victoria & Sloane Square Stns

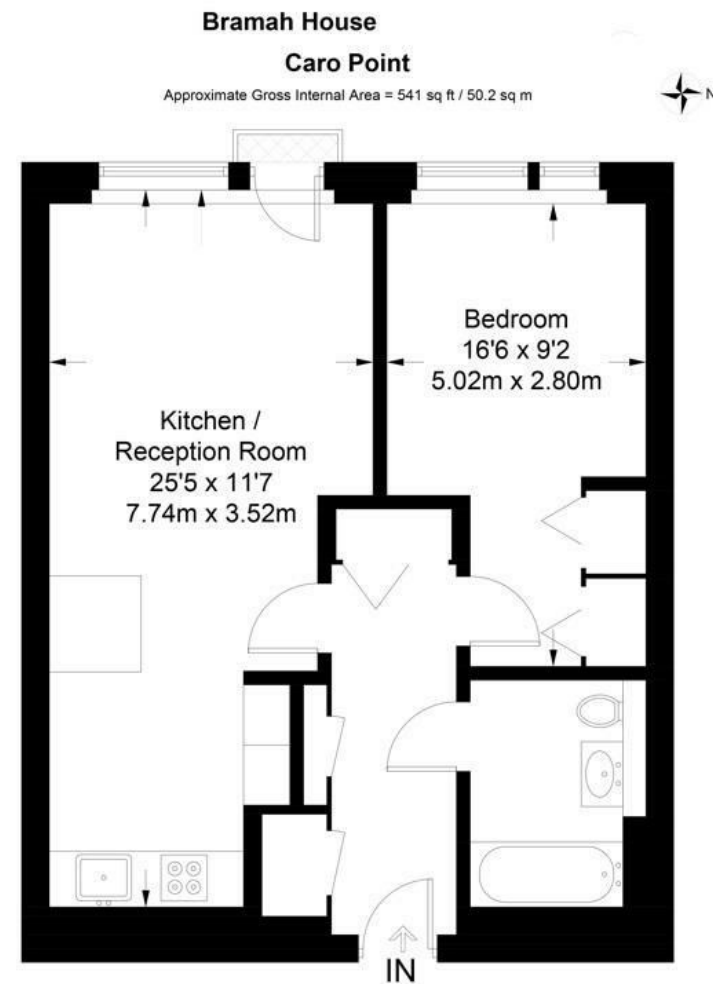


Available via Garton Jones on-site office at Grosvenor Waterside (underneath Bramah House).

*Please note furniture may differ to that shown in the current photos

Council Tax band: E - Westminster City Council

5 week security deposit required. 12 month minimum term.



Not to scale, for guidance only and must not be relied upon as a statement of fact.
All measurements and areas are approximate only and have been prepared in
accordance with the current edition of the RICS Code of Measuring Practice.

